

Edenvale Gathering of the Classics 2024

Aircraft Arrival Procedures

Date: Saturday, August 10, 2024

Rain Date: Sunday August 11, 2024

Time: All Day – Daylight Hours

The Edenvale Classic Aircraft Foundation is pleased to host the 2024 “Gathering of the Classics” (GOTC).

Arrival Advisory – Note: This briefing is for information purposes only, and in no way absolves the pilot in command from the responsibility of operating according to the CARS and exercising good airmanship. The Edenvale Classic Aircraft Foundation, and the Edenvale Airport, in no way accept responsibility for the operation, airspace separation, ground separation, or handling of any aircraft attending the Gathering of the Classics. Pilots flying aircraft into the Gathering of the Classics and taxiing on the ground, do so at their own risk.

This procedure has worked well in past years, with no incidents other than a few go-arounds. But there was needless radio chatter. ***Please “minimize the talking and maximize the seeing”.***

Background:

B1. There may be a large number of aircraft attending. The tendency is for many aircraft to arrive at roughly the same time.

B2. Many of the aircraft are NORDO – all are welcome. Pilots must be alert for NORDO traffic.

B3. There is no positive ATC Control. The field is Unicom, 122.775. Airfield advisories will be available and will be broadcast frequently.

B4. Thus, pilots will find it helpful if an arrival procedure is in place which encourages a smoother traffic flow.

B5. Since the Arrival Procedure must take into account pilots who are NORDO, or who do not see this advisory, the actual circuit entry must conform to Standard Circuit Entry procedures.

B6. The Pilot-In-Command is solely responsible for establishing aircraft separation, and complying with standard circuit procedures.

GOTC Arrival Procedure – General

UNICOM 122.775

AWOS 123.175

GROUND 123.45

G1. Pilots should familiarize themselves with the arrival by reading this document ahead of time.

G2. The runway in use will be 13/31 with LEFT-HAND CIRCUITS. The other runway, 08/26 will be CLOSED (will be NOTAM'd) and will be used as a taxiway.

G3. Pilots are encouraged to stay on the paved surface of 13/31.

G4. Pilots should maintain a listening watch on 122.775, Edenvale, when within 15 miles, to determine runway in use. There will likely be enough traffic that a call will not be required. ***Pilots are encouraged to keep the radio calls to an absolute but safe minimum.***

G5. A reasonable planned target speed during either arrival is 85 mph. Pilots of aircraft unable to accommodate this speed (some are too fast, some are too slow), will have to be aware and make adjustments.

G6. There will be no Positive Aircraft Control, but establishing these longer arrival routes should help alleviate the bottleneck of past years.

G7. Pilots should plan to spend as little time as possible on the runway.

G8. Pilots should take great care around spectators, and be ready to shut down at the first indication of a conflict.

G9. Helicopters – Please do not fly at low altitude over the crowd or the parked aircraft. Helicopter parking will be on the button of Runway 26.

GOTC Arrival Procedure – RWY 31

LEFT-HAND CIRCUIT

See Diagrams R31 & T31

UNICOM 122.775

AWOS 123.175

GROUND 123.45

R31-1. If Runway 31 is in use, pilots are encouraged to begin an arrival route over the town of Minesing (N044° 26.5', W079° 50.4'), at 2000 ASL, arranging their flight to merge from the NE, E, SE.

R31-2. Pilots are encouraged to space themselves out, and fly north along HWY 26, then follow the highway as it turns west, towards the airport, angling slightly north (as per the diagram), descending to 1700' ASL, to make an overhead entry into a left-hand circuit.

R31-3. Once landed on 31, do **not plan to turn off on taxiway "D", exit onto runway 08** (approximately 2900 ft. available). If you need special assistance or wish to refuel immediately please contact "GROUND" on 123.45. Otherwise aircraft marshalers will give directions to parking areas.

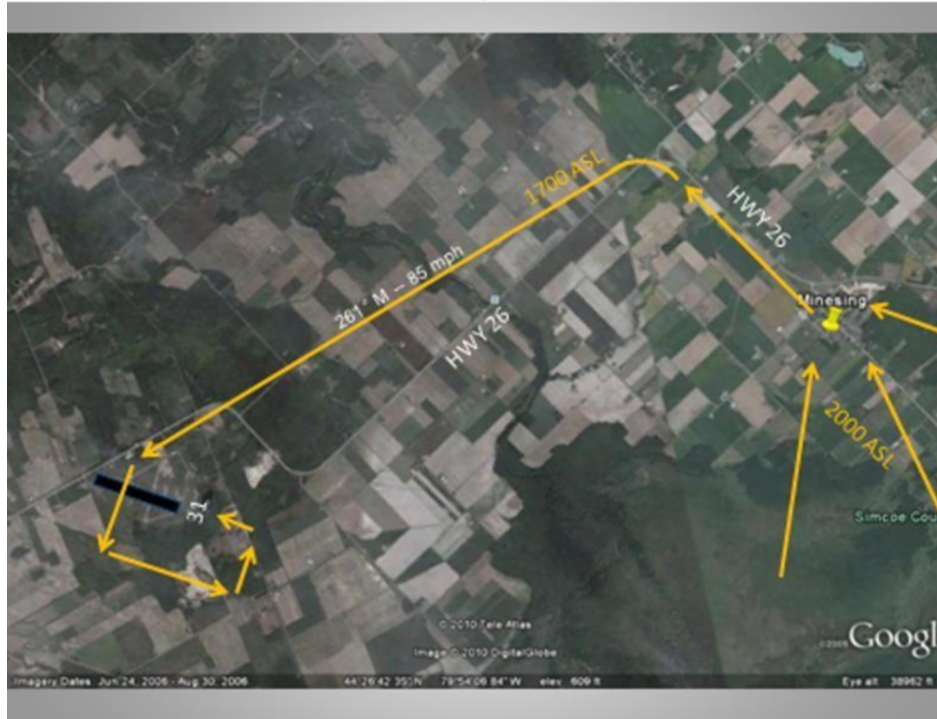
HELICOPTERS ONLY

R31-4. **Helicopters – Arrival** –Plan to approach from the east, at a suitable altitude to remain clear of any fixed-wing aircraft, and air-taxi remaining south of taxiway "D" to the parking area at the button of Runway 26. Departure – pilots are encouraged to air-taxi across the airfield remaining south of taxiway "D", then follow the runway 31 departure path.

R31-5. **Helicopters – Taxi and Parking** - Pease do not fly at low altitude over the crowd or the parked aircraft. Parking will be at the end of Runway 26.

R31-6 **Helicopters – Departure** – pilots are encouraged to air-taxi across the airfield remaining south of taxiway "D", then follow the runway 31 departure path.

GOTC Arrival Procedure – RWY 31
Arrival Diagram R31



GOTC Arrival Procedure – RWY 31
Taxi Diagram T31



GOTC Arrival Procedure – RWY 13

LEFT-HAND CIRCUITS

See Diagrams R13 & T13

UNICOM 122.775

AWOS 123.175 GROUND 123.45

R13-1. If Runway 13 is in use, pilots are encouraged to begin an arrival route over the town of Stayner, (N44° 25.1, W080° 05.1) at 1700' ASL, arranging their flight to merge from the NW, W, or SW.

R13-2. Pilots are encouraged to space themselves out and fly east along HWY 26, angling slightly to the south to make an overhead entry into a left-hand circuit.

R13-3. Once landed on 13, pilots should plan to exit via the taxiway D (adjacent to the blue roofed large hangar, approx. 2300 ft available). If you need special assistance or wish to refuel immediately please contact "GROUND" on 123.45. Otherwise aircraft marshalers will give directions to parking areas. If unable to stop before "D", continue as necessary and plan to back track to "D". Look for the marshalers. Use the turning bay at the end of 13 as necessary to make way for landing traffic. We recommend against using the grass runway under construction or the old pavement to the East.

HELICOPTERS ONLY

R13-4. **Helicopters – Arrival** - in order to avoid crossing the crowd or the active runway, pilots are encouraged to fly the same standard circuit joining that the fixed-wing aircraft do, then once south of taxiway "D", air-taxi to the parking area at the end of Runway 26.

R13-5. **Helicopters – Taxi and Parking** - Please do not fly at low altitude over the crowd or the parked aircraft. Helicopter parking will be at the button of Runway 26.

R13-6 **Helicopters - Departure** - Pilots are encouraged to exit the property to the east.

GOTC Arrival Procedure – RWY 13
Arrival Diagram R13



GOTC Arrival Procedure – RWY 13
Taxi Diagram T13



General Notes:

N1. There is no air show. There is no airspace closure.

N2. Staff will be on-hand by 09:00.

N3. The circuit will be very busy. Pilots are encouraged to keep the radio calls to an absolute but safe minimum.

N4. The aircraft types arriving will vary from J-3 Cubs to light twins, with a wide speed difference. Pilots must space themselves out.

N5. Fuel- Mogas 91, 100LL and oil are available using a self-serve pump. Credit Cards only, no cash. Note that ramp space is very tight around the pumps; this limited space and spectators will make access very difficult until later in the afternoon. The aircraft may need to be pushed by hand in the refueling area. Please notify "GROUND" on 123.45 or the aircraft marshals that you wish to maneuver to the re-fuelling ramp when you are ready.

N6. Parking Aircraft marshals will be on ATV's wearing "Follow Me" shirts. The Marshals on the ramp will be wearing high-visibility vests.

N7. Pilots will receive Free Admission to GOTC.

N8. Upon arrival pilots are requested to come to register at the registration desk located in Hangar C 4/5 (ECAF hangar). We will only use this information to determine the number and type of aircraft attending and with your permission, contact you in regards to other special events at ECAF. Coffee and donuts will be available in the ECAF hangar for a nominal charge.

GOTC Departure Procedure – RWY 31

LEFT-HAND CIRCUITS

UNICOM **122.775**

AWOS **123.175** **GROUND** **123.45**

R31D-1. Please cooperate with marshalers.

R31D-2. Pilots are encouraged to use taxiway “D” and then backtrack on Runway 31, there may be delays.

R31D-3 If you need special assistance or wish to refuel please contact “GROUND” @ 123.45. Otherwise follow the aircraft marshalers directions to the taxiway.

GOTC Departure Procedure – RWY 13

LEFT-HAND CIRCUITS

UNICOM **122.775**

AWOS **123.175** **GROUND** **123.45**

R13D-1. Please cooperate with marshalers.

R13D-2. Pilots are encouraged to depart from the intersection of Runway 08, there is 2900 ft. available from the intersection, although backtracking to the button of Runway 13 is at available pilot’s discretion.

R13D-3 If you need special assistance or wish to refuel please contact “GROUND” @ 123.45. Otherwise follow the aircraft marshalers directions to the taxiway.

EMERGENCY PROCEDURES

E1. If an accident occurs and runway 13/31 is closed all take-off and landing operations will cease. Pilots should remain clear of the circuit and proceed to an alternate aerodrome. Unicom will advise when the runway-in-use is clear.

Alternate Airports (nearest):

Collingwood CNY3 730 50A 122.85 , 8 nm, 275 degrees True from Edenvale.

Hurononia CYEE 773 40A 122.85 14.4 nm, 006 degrees True from Edenvale.

Lake Simcoe Regional CYLS 972 60A 122.7, 17.5 nm, 081 degrees True from Edenvale.

Parking: Please click on the link below and download our parking instructions.

Disclaimer

Note: this briefing is for information purposes only, and in no way absolves the pilot in command from the responsibility of operating according to the CARS, and exercising good airmanship. The Edenvale Classic Aircraft Foundation, and the Edenvale Airport, in no way accept responsibility for the operation, airspace separation, ground separation, or handling of any aircraft attending the Gathering of the Classics. Pilots flying aircraft into the Gathering of the Classics, and taxiing on the ground, do so at their own risk.